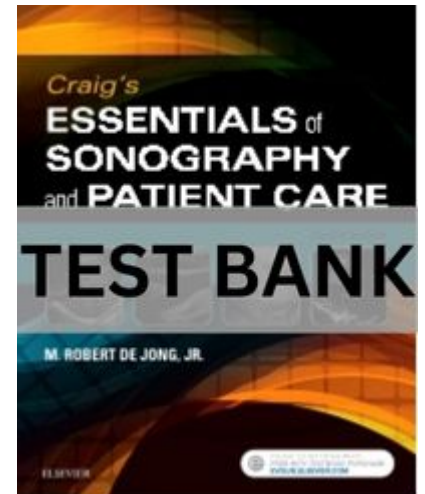


Craig's Essentials of Sonography and Patient Care 4th Edition Test Bank

Chapter 01: The History of Diagnostic Medical Sonography and Sonographers de Jong: Craig's Essentials of Sonography and Patient Care, 4th Edition



MULTIPLE CHOICE

1. Diagnostic ultrasound uses frequencies between:

- a. 2.0 and 15.0 MHz.
- b. 1.0 and 15.0 MHz.
- c. 2.0 and 20.0 MHz.
- d. 1.0 and 20.0 MHz.

ANS: D

2. Sound exceeds human hearing when the cycles per second exceeds:

- a. 10,000 Hz.
- b. 15,000 Hz.
- c. 20,000 Hz.
- d. 25,000 Hz.

ANS: C

3. Humans can hear frequencies as low as:

- a. 10 cycles per second.
- b. 15 cycles per second.
- c. 20 cycles per second.
- d. 50 cycles per second.

ANS: C

4. Sonography is the _____ oldest imaging modality.

- a. second
- b. third
- c. fourth
- d. fifth

ANS: B

5. Which physician devoted his career to the study and development of noninvasive measurement of the peripheral vascular system?

- a. John Reid
- b. Don Baker
- c. Rokuru Uchida

Craig's Essentials of Sonography and Patient Care 4th Edition Test Bank

d. Eugene Strandness

ANS: D

6. Which physician developed the first application of ultrasound for medical purposes?

- a. Don Baker
- b. George Ludwig
- c. John Reid
- d. James Willocks

ANS: B

7. Who discovered the importance of a full urinary bladder to visualize pelvic structures?

- a. John Wild
- b. Ian Donald
- c. Inge Elder
- d. Carl Hellmuth Hertz

ANS: B

8. Who explored the use of ultrasound in the heart using continuous wave and M-mode?

- a. George Kossoff
- b. William Wright
- c. Inge Edler
- d. Ian Donald

ANS: C

9. The phenomenon of piezoelectricity was discovered by:

- a. the Curie brothers.
- b. John Reid.
- c. Ian Donald.
- d. Wilhelm Roentgen.

ANS: A

10. Color flow imaging started to take off in the United States in:

- a. 1980.
- b. 1984.
- c. 1987.
- d. 1991.

ANS: C

11. Early sonographers were called:

- a. radiographers.
- b. ultrasound technicians.
- c. ultrasound technologists.
- d. ultrasound technical specialists.

ANS: D

12. Who discovered X-ray?

- a. John Reid

Craig's Essentials of Sonography and Patient Care 4th Edition Test Bank

- b. Martin Wilcox
- c. George Ludwig
- d. Wilhelm Roentgen

ANS: D

13. Which country led the development of color Doppler?
- a. Germany
 - b. Japan
 - c. Holland
 - d. United States

ANS: B

14. Research began on medical applications for sonar after:
- a. World War I.
 - b. World War II.
 - c. Korean War.
 - d. Vietnam War.

ANS: B

15. George Kossoff helped to develop:
- a. M-mode.
 - b. grayscale.
 - c. color Doppler.
 - d. continuous wave Doppler.

ANS: B

16. In 1980, _____ shades of gray were displayed in the static B-scanner.
- a. 32
 - b. 64
 - c. 128
 - d. 256

ANS: B

17. Who first considered using ultrasound to distinguish between healthy and cancerous tissue in both the breast and intestines?
- a. John Wild
 - b. Douglass Howry
 - c. Ian Donald
 - d. George Ludwig

ANS: A

18. Who tried to disprove Christian Doppler's theory using a musician on a train?
- a. Shigeo Satomura
 - b. Robert Rushner
 - c. Eugene Strandess
 - d. Christoph Hedrick Diederik

ANS: D

Craig's Essentials of Sonography and Patient Care 4th Edition Test Bank

19. Who developed the first Doppler device for medical diagnostic purposes?
- a. Eugene Strandess
 - b. Shigeo Satomura
 - c. Robert Rushner
 - d. Koroku Namekawa

ANS: B

20. The first annual sonographer awareness week occurred in:
- a. 1980.
 - b. 1984.
 - c. 1987.
 - d. 1991.

ANS: D

21. The American Medical Association defines technician as someone with:
- a. a high school diploma.
 - b. 6 weeks to 6 months beyond high school.
 - c. 6-12 months beyond high school.
 - d. 2 years beyond high school.

ANS: B

22. The RVT credential was first offered in:
- a. 1980.
 - b. 1983.
 - c. 1990.
 - d. 1991.

ANS: B

23. The first practical, oral, and written ultrasound examinations were administered in:
- a. 1970.
 - b. 1974.
 - c. 1980.
 - d. 1983.

ANS: B

24. The RDCS credential was first offered in:
- a. 1980.
 - b. 1983.
 - c. 1990.
 - d. 1991.

ANS: C

25. The term sonologist refers to a _____ who interprets the ultrasound study.
- a. radiologist
 - b. cardiologist
 - c. obstetrician
 - d. physician no matter the specialty

Craig's Essentials of Sonography and Patient Care 4th Edition Test Bank

ANS: D

Chapter 02: Patient Care Across the Specialties

de Jong: Craig's Essentials of Sonography and Patient Care, 4th Edition

MULTIPLE CHOICE

1. The ability to imagine or have experienced what a person is going through.
 - a. Compassion
 - b. Empathy
 - c. Sympathy
 - d. Communication

ANS: B

2. Information may be exchanged by using:
 - a. words.
 - b. behaviors.
 - c. symbols.
 - d. all the above.

ANS: D

3. A feeling of sympathy for someone and having the desire to alleviate that person's negative state.
 - a. Empathy
 - b. Respect
 - c. Supportive
 - d. Compassion

ANS: D

4. Being conscious of another person's situation or emotion.
 - a. Autonomy
 - b. Empathy
 - c. Sympathy
 - d. Compassion

ANS: C

5. The exchange of information in order to reach a mutual understanding.
 - a. Sympathy
 - b. Empathy
 - c. Compassion
 - d. Communication

ANS: D

6. When listening to a patient you should:
 - a. give your full attention to the patient.
 - b. find a solution for the patient's problem.
 - c. place patient's name into the ultrasound unit.
 - d. review previous imaging studies.