

Medical Parasitology: A Self-Instructional Text 7th Edition Test Bank

Chapter 1. Introduction

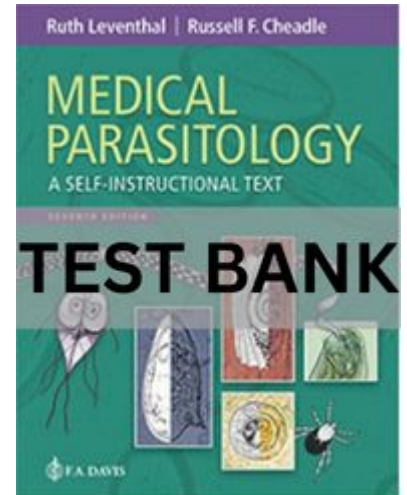
1. In a general nematode parasite's life cycle, the host may ingest a fertile egg. This stage of the life cycle is referred to as the:
 - a. Definitive host phase
 - b. Diagnostic stage
 - c. Infective stage
 - d. Method of infection

2. A parasite that lives inside a host is referred to as a(n):
 - a. Accidental parasite
 - b. Ectoparasite
 - c. Endoparasite
 - d. Facultative parasite

3. *Zoonosis* is a term used to describe humans' relationship with a(n):
 - a. Accidental parasite
 - b. Ectoparasite
 - c. Endoparasite
 - d. Facultative parasite

4. An animal that harbors a parasite that can also infect humans is referred to as a(n):
 - a. Definitive host
 - b. Intermediate host
 - c. Reservoir host
 - d. Transport host

5. The host in which the parasite reaches sexual or reproductive maturity is referred to as a(n):
 - a. Definitive host
 - b. Intermediate host
 - c. Reservoir host
 - d. Transport host



Medical Parasitology: A Self-Instructional Text 7th Edition Test Bank

Answer Key for Chapter 1. Introduction

1. In a general nematode parasite's life cycle, the host may ingest a fertile egg. This stage of the life cycle is referred to as the:

- a. Definitive host phase
- b. Diagnostic stage
- c. Infective stage
- d. Method of infection

ANS: C

RATIONALE: This is the stage of the life cycle at which the parasite is capable of entering and developing within the host. It is a required part of the life cycle of that parasite.

KEY: Introduction: parasite definitions/life cycles | Cognitive level: recall

2. A parasite that lives inside a host is referred to as a(n):

- a. Accidental parasite
- b. Ectoparasite
- c. Endoparasite
- d. Facultative parasite

ANS: C

RATIONALE: Endoparasites live inside the host. Ectoparasites live on the outside of the host. Facultative parasites can live as well outside the host as inside the host; host infection usually occurs accidentally. Other accidental parasites may include parasites that usually infect other animals.

KEY: Introduction: parasite definitions/life cycles | Cognitive level: recall

3. *Zoonosis* is a term used to describe humans' relationship with a(n):

- a. Accidental parasite
- b. Ectoparasite
- c. Endoparasite
- d. Facultative parasite

ANS: A

RATIONALE: Zoonosis is an accidental infection with a parasite that usually parasitizes animals. Endoparasites live inside the host. Ectoparasites live outside the host. Facultative parasites can live as well outside the host as inside the host; host infection usually occurs accidentally.

KEY: Introduction: parasite definitions/life cycles | Cognitive level: recall

4. An animal that harbors a parasite that can also infect humans is referred to as a(n):

Medical Parasitology: A Self-Instructional Text 7th Edition Test Bank

- a. Definitive host
- b. Intermediate host
- c. Reservoir host
- d. Transport host

ANS: C

RATIONALE: Reservoir hosts harbor parasites that are also infective for humans. Infections occur when humans encounter infected animals or infective forms related to that parasite's life cycle.

KEY: Introduction: parasite-host relationships | Cognitive level: recall

5. The host in which the parasite reaches sexual or reproductive maturity is referred to as a(n):
- a. Definitive host
 - b. Intermediate host
 - c. Reservoir host
 - d. Transport host

ANS: A

RATIONALE: The definitive host harbors the parasite in its complete form, which promotes continuance of the parasite's life cycle. A reservoir host also serves as a definitive host.

KEY: Introduction: parasite-host relationships | Cognitive level: recall

Chapter 2. Nematoda

1. A clinical sign that may suggest the presence of a filarial nematode infection is:
- a. Diarrhea
 - b. Eosinophilia
 - c. Jaundice
 - d. Microcytic anemia
2. The nematode infection that may become more severe through ingestion of infective eggs, especially in infected infants, is:
- a. *Ancylostoma duodenale*
 - b. *Enterobius vermicularis*
 - c. *Strongyloides stercoralis*
 - d. *Trichinella spiralis*

Medical Parasitology: A Self-Instructional Text 7th Edition Test Bank

3. In the *Ascaris lumbricoides* life cycle, after eggs are ingested, the next stage in the life cycle that must occur before a mature adult can live in the host's intestine is called the:
- Diagnostic stage
 - Infective stage
 - Liver-lung migration
 - Method of infection
4. Patients who have heavy infections with *Necator americanus* may exhibit all of the following symptoms **EXCEPT**:
- Diarrhea
 - Larval dermatitis
 - Macrocytic anemia
 - Microcytic anemia
5. The nematode egg that appears as a barrel-shaped structure with clear polar plugs at each end of the egg belongs to:
- Ascaris lumbricoides*
 - Enterobius vermicularis*
 - Strongyloides stercoralis*
 - Trichuris trichiura*
6. A slender round worm measuring 25 cm was recovered from a toilet following a child's trip to the bathroom. The specimen most likely is:
- Ascaris lumbricoides*
 - Enterobius vermicularis*
 - Strongyloides stercoralis*
 - Trichuris trichiura*
7. A 7-year-old boy's CBC revealed a microcytic anemia with eosinophilia during an office visit for symptoms of diarrhea. The most likely parasite involved in the infection is:
- Enterobius vermicularis*
 - Necator americanus*
 - Trichuris trichiura*
 - Wuchereria bancrofti*
8. Which of the following infections is not diagnosed by finding eggs or lava in fecal specimens?

Medical Parasitology: A Self-Instructional Text 7th Edition Test Bank

- a. *Ascaris lumbricoides*
- b. *Necator* spp.
- c. *Trichinella spiralis*
- d. *Trichuris trichiura*

9. Which of the following parasitic diseases is a zoonosis?

- a. *Ascaris lumbricoides*
- b. *Dracunculus medinensis*
- c. *Strongyloides stercoralis*
- d. *Trichinella spiralis*

10. Cutaneous larvamigrans is caused by:

- a. *Ascaris lumbricoides*
- b. *Necator americanus*
- c. *Strongyloides stercoralis*
- d. *Toxocara canis*

11. The nematode parasite that may complete its life cycle without leaving the host is:

- a. *Ascaris lumbricoides*
- b. *Necator americanus*
- c. *Strongyloides stercoralis*
- d. *Toxocara canis*

12. All of the following have life cycles that require larval lung migrations **EXCEPT**:

- a. *Ascaris lumbricoides*
- b. *Necator americanus*
- c. *Strongyloides stercoralis*
- d. *Trichuris trichiura*

13. The diagnostic form recovered in feces in *Strongyloides stercoralis* infections is the:

- a. Adult worm
- b. Egg
- c. Filariform larva
- d. Rhabditiform larva

Medical Parasitology: A Self-Instructional Text 7th Edition Test Bank

14. A soldier returning from Iraq noticed a blister above his ankle that subsequently opened while he was swimming in his family pool. On further examination, he noticed a worm in the open blister. The possible parasite in this lesion is:

- a. *Ancylostoma duodenale*
- b. *Dracunculus medinensis*
- c. *Toxocara canis*
- d. Visceral larva migrans

15. All of the following infections are diagnosed by finding microfilaria in blood **EXCEPT**:

- a. *Wuchereria bancrofti*
- b. *Onchocerca volvulus*
- c. *Loa loa*
- d. *Brugia malayi*

16. A microfilaria recovered in a blood sample from a patient from Vietnam had two nuclei at the tip of the tail. The worm was enclosed in a sheath. This parasite is:

- a. *Brugia malayi*
- b. *Loa loa*
- c. *Onchocerca volvulus*
- d. *Wuchereria bancrofti*

17. An immigrant from central Africa is exhibiting transient subcutaneous swelling in the arm. A blood smear revealed a sheathed microfilaria with a single row of nuclei present in the posterior of the parasite. The most likely identification is:

- a. *Brugia malayi*
- b. *Loa loa*
- c. *Onchocerca volvulus*
- d. *Wuchereria bancrofti*

18. The diagnosis of *Enterobius vermicularis* infection is accomplished by observing:

- a. Eggs in feces
- b. Eggs recovered from the perianal region
- c. Larva in feces
- d. Trophozoites in feces

19. The rhabditiform larva of *Strongyloides stercoralis* has a:

- a. Long buccal cavity

Medical Parasitology: A Self-Instructional Text 7th Edition Test Bank

- b. Sheath
- c. Large genital primordium
- d. Notched tail

20. Closed fecal sanitation systems had directly led to the reduction of all the following nematode infections **EXCEPT**:

- a. Ascariasis
- b. Hookworm disease
- c. Strongyloidiasis
- d. Trichinosis

21. The diagnostic form of this parasite appears as an oval thin-shelled egg with a clear area around the eight-celled immature embryo. This parasite is:

- a. *Ascaris lumbricoides*
- b. *Enterobius vermicularis*
- c. Hookworm
- d. *Trichuris trichiura*

22. The nematode infection that is acquired by ingesting a Cyclops (water flea) is:

- a. *Dracunculus medinensis*
- b. *Enterobius vermicularis*
- c. *Necator americanus*
- d. *Trichinella spiralis*

23. Which of the following organisms or infections could be transmitted in the laboratory?

- a. *Ascaris lumbricoides*—Ascariasis
- b. *Enterobius vermicularis*—pinworm infection
- c. *Strongyloides stercoralis*—Strongyloidiasis
- d. *Trichuris trichiura*—whipworm infection

24. Which of the following parasitic diseases can cause blindness?

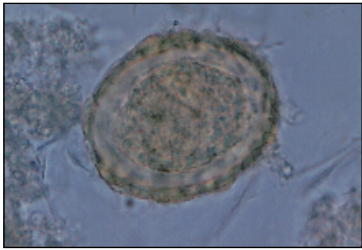
- a. *Brugia malayi*
- b. *Loa loa*
- c. *Onchocerca volvulus*
- d. *Wuchereria bancrofti*

Medical Parasitology: A Self-Instructional Text 7th Edition Test Bank

25. Elephantiasis is a clinical symptom associated with:

- a. *Brugia malayi*
- b. *Loa loa*
- c. *Onchocerca volvulus*
- d. *Strongyloides stercoralis*

26. Name the parasite shown in the following image:



- a. *Ascaris lumbricoides* egg
- b. *Enterobius vermicularis* egg
- c. Hookworm egg
- d. *Trichuris trichiura* egg

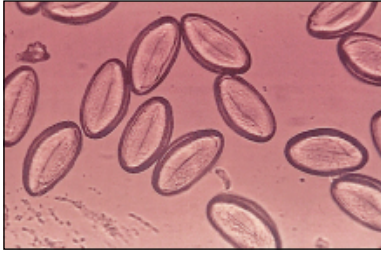
27. Name the parasite shown in the following image:



- a. *Ascaris lumbricoides* egg
- b. *Enterobius vermicularis* egg
- c. Hookworm egg
- d. *Trichuris trichiura* egg

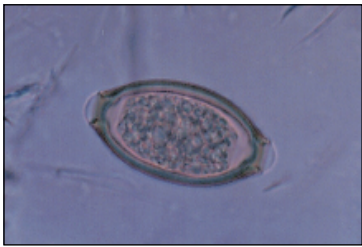
28. Name the parasite shown in the following image:

Medical Parasitology: A Self-Instructional Text 7th Edition Test Bank



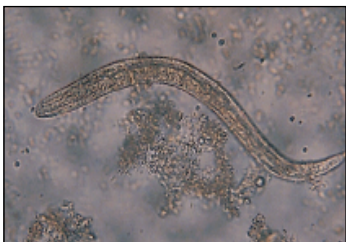
- a. *Ascaris lumbricoides* egg
- b. *Enterobius vermicularis* egg
- c. Hookworm egg
- d. *Trichuris trichiura* egg

29. Name the parasite shown in the following image:



- a. *Ascaris lumbricoides* egg
- b. *Enterobius vermicularis* egg
- c. Hookworm egg
- d. *Trichuris trichiura* egg

30. Name the parasite shown in the following image:



- a. *Wuchereria bancrofti*—microfilaria
- b. Filariform larva
- c. Pinworm—female
- d. Rhabditiform larva

Medical Parasitology: A Self-Instructional Text 7th Edition Test Bank

Answer Key for Chapter 2. Nematoda

1. A clinical sign that may suggest the presence of a filarial nematode infection is:
- Diarrhea
 - Eosinophilia
 - Jaundice
 - Microcytic anemia

ANS: B

RATIONALE: Migrating nematodes, especially filarial parasites, are usually associated with blood or tissue eosinophilia.

KEY: Nematoda: life cycle/clinical symptoms | Cognitive level: correlation

2. The nematode infection that may become more severe through ingestion of infective eggs, especially in infected infants, is:
- Ancylostoma duodenale*
 - Enterobius vermicularis*
 - Strongyloides stercoralis*
 - Trichinella spiralis*

ANS: B

RATIONALE: *Enterobius vermicularis* infections become more severe due to the pruritus caused by new eggs released by dying females, which leads to autoreinfection through ingestion of these new eggs.

KEY: Nematoda: life cycle | Cognitive level: correlation

3. In the *Ascaris lumbricoides* life cycle, after eggs are ingested, the next stage in the life cycle that must occur before a mature adult can live in the host's intestine is called the:
- Diagnostic stage
 - Infective stage
 - Liver-lung migration
 - Method of infection

ANS: C

RATIONALE: The liver-lung migration phase of the *Ascaris lumbricoides* life cycle occurs as the larva form migrates from the intestine to the lungs before returning to the intestine to become a mature adult worm. See life cycle, p. 17.

KEY: Nematoda: life cycle | Cognitive level: recall

4. Patients who have heavy infections with *Necator americanus* may exhibit all of the following symptoms **EXCEPT**: